



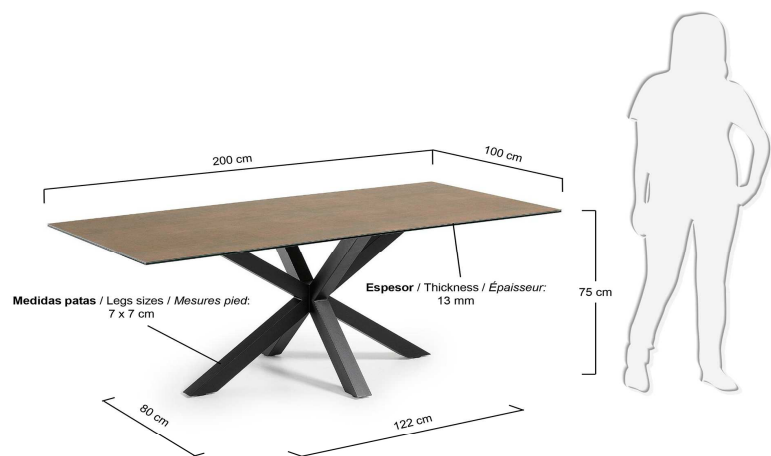
ARYA

product code	C408K10
product description	ARYA Table 200x100 Black, Porcelain Iron Corten Dining table with epoxy paint steel legs and top in high-tech porcelain slab with glass support. Iron corten finish.

product sizes

height x width x depth (cm)	75	x	200	x	100
product weight (Kg)	80,7				

technical drawings



product features

use (domestic/office)	Domestic
appliçance (inner/outer)	Inner
extendible (yes/no)	No
adjustable height (yes/no)	No
foldable (yes/no)	No
up to seats	8
max. load (Kg)	60
top material	Glass + Ceramic
top finishing	Iron Corten finishing
top thickness	13 (10+3) mm
leaf material	
leaf finishing	
number of leaves	
stored inside (yes/no)	No

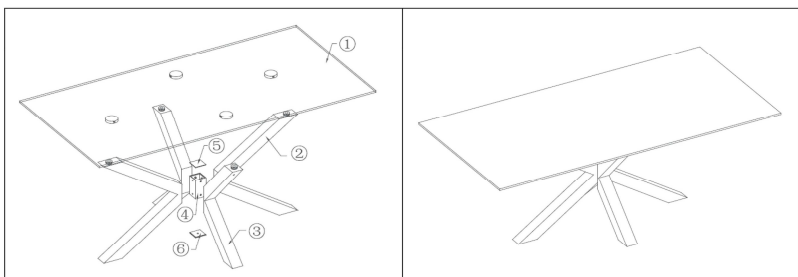
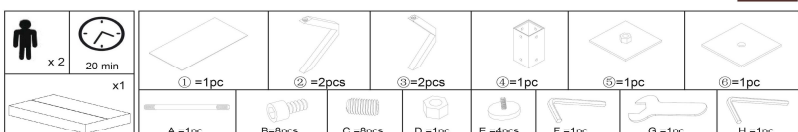
legs material	Steel
legs finishing	Matt painting
feet protection (yes/no)	Yes
adjustable feet (yes/no)	Yes
RAL Specifications	RAL EFFECT (E2): RAL 790-4 // RAL CLASSIC (K5): RAL 9004
size and shape variation (yes/no)	No
color variation (yes/no)	No
other details	
general warnings	Waterproof. Resistant to any kind of chemical cleaning agent. Resistant to high temperatures. Resistant to wear and tear. UV resistant. It is composed entirely of natural materials
specific use and care instructions	Clean with a damp cloth and dry immediately
years of guarantee made according to	2
good to know	Ceramic is made of: quartz, feldspar, clays and natural minerals. There is a butiral (PVB) between glass and ceramic. Legs form a rectangle of 122 x 80 cm. Tube shape: 7 x 7 cm

assembly

assembly required (yes/no)	Yes
difficulty of assembly (hard/medium/easy)	Easy
assembly time (min)	20
people required	2
assembly suggestions	Assemble the legs first and then screw the top

assembly instructions

ARYA / ARGO



This product is property of Julia Grup Furniture Solutions S.L. (B-17616277) - Pol. Ind. Bosc d'en Cuca - C/Tallers, 14 - 17410 Sils - SPAIN

packaging

units per lot	1
cbm (m3) / gross weight (Kg)	0,167 / 86
n° of boxes	2
box 1	C752K10 - 1
description	TOP
description box	CERAMICO Arya Top 200x100 porcelain Iron Corten
height x width x depth (cm)	5 x 205 x 105
cbm (m3) / gross weight (Kg) / net weight (Kg)	0,1076 / 65 / 62,22
box 2	NEWARY12E01 - 2
description	LEGS
description box	NEW-ARYA Legs Rectangular Epoxy Black
height x width x depth (cm)	8 x 97 x 76,5
cbm (m3) / gross weight (Kg) / net weight (Kg)	0,0594 / 21 / 18,5
box 3	
description	
description box	
height x width x depth (cm)	x x
cbm (m3) / gross weight (Kg) / net weight (Kg)	/ /